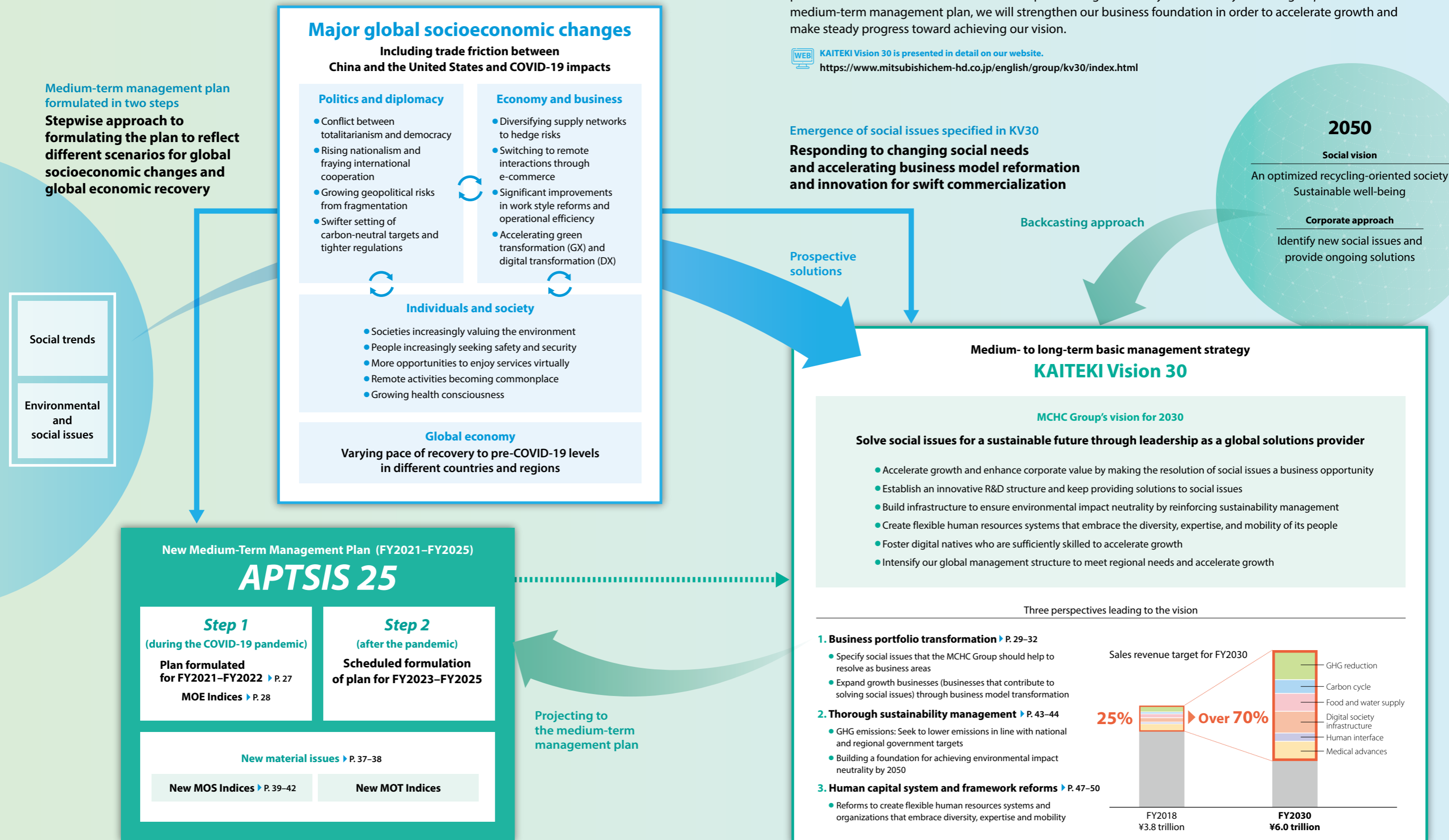


# Formulating a New Medium-Term Management Plan to Realize KAITEKI Vision 30



KAITEKI Vision 30 (KV30) is our medium- to long-term basic management strategy, formulated by backcasting from our vision for 2050 in order for the MCHC Group to achieve sustainable growth. With the COVID-19 pandemic, risks related to social issues specified in KV30 are starting to emerge, so the MCHC Group is responding to changing social needs and accelerating business model reformation and innovation in order to swiftly commercialize growth businesses (see P. 31). We have taken a stepwise approach to the formulation of the medium-term management plan based on KV30 in order to reflect the impacts brought about by COVID-19. By executing *Step 1* of the APTSIS 25 medium-term management plan, we will strengthen our business foundation in order to accelerate growth and make steady progress toward achieving our vision.

[KAITEKI Vision 30 is presented in detail on our website.](https://www.mitsubishichem-hd.co.jp/english/group/kv30/index.html)  
<https://www.mitsubishichem-hd.co.jp/english/group/kv30/index.html>